



Developing a World Class Dairy

Jakob Nielsen – Project Director

Contents

- **Arla strategy on sustainability:**
 - Objectives
 - Status
 - Look ahead
- **Aylesbury Dairy**





“Our objective is to develop our business on a foundation of long-term perspectives with respect for, and in harmony with, our surroundings.”

-Peder Tuborgh

CEO Arla Foods amba

“Arla's key principle is "Closer to Nature" and therefore Climate Change and reducing carbon are fundamental to our business.”

-Peter Lauritzen

-Executive Vice President, Arla Foods UK

Arla amba – Our Responsibility CSR

Objectives

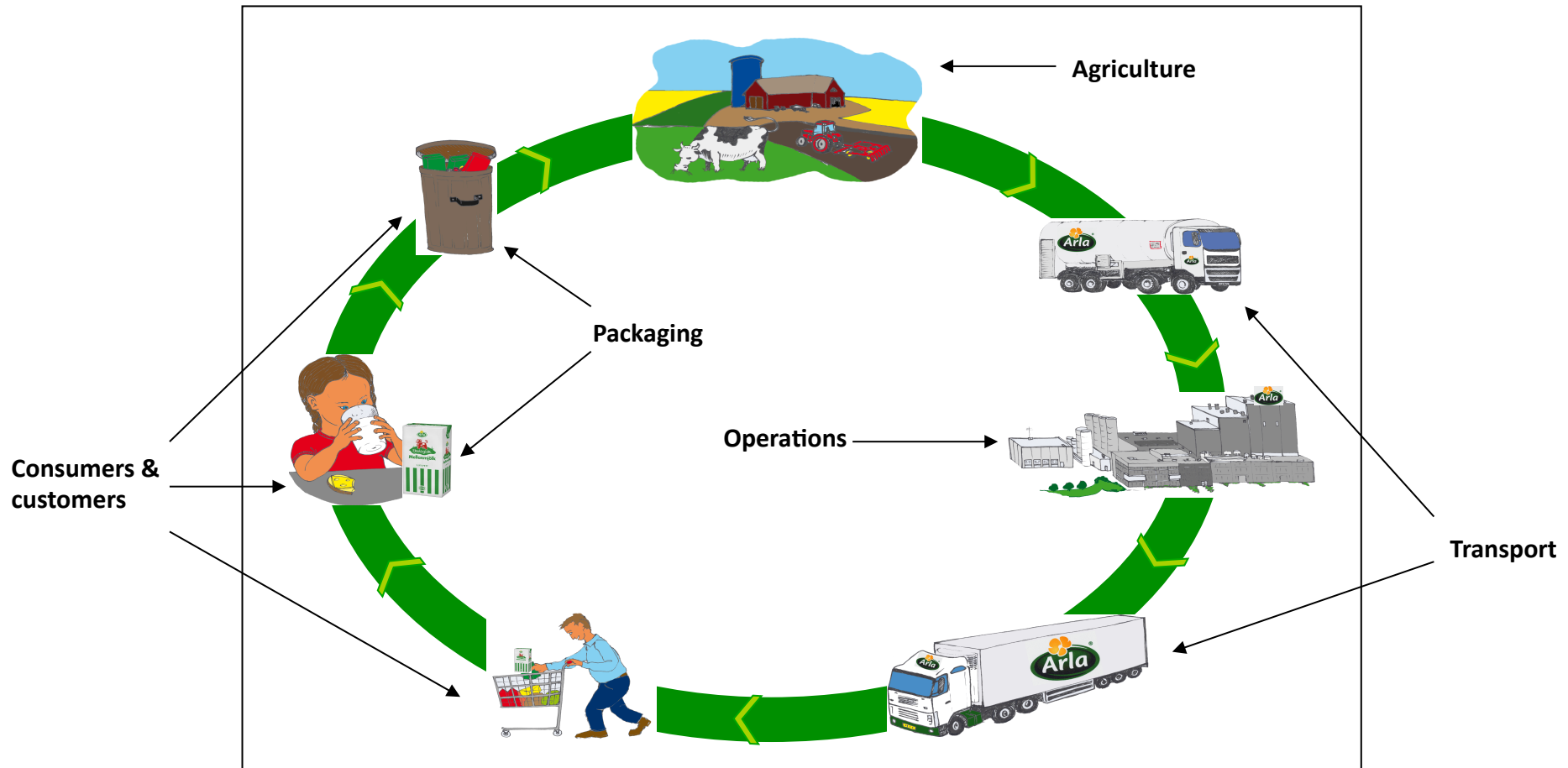
- CO2 emissions reduced 25% by 2020
- Achieve 50% renewable energy by 2020
- All packaging recyclable

Status

- CO2 emissions reduced by 6.5% from 2005 to 2011
- FSC packaging – all cardboard
- Biogas from Arla farms manure



Arla's environmental strategy 2020 covers the entire supply chain



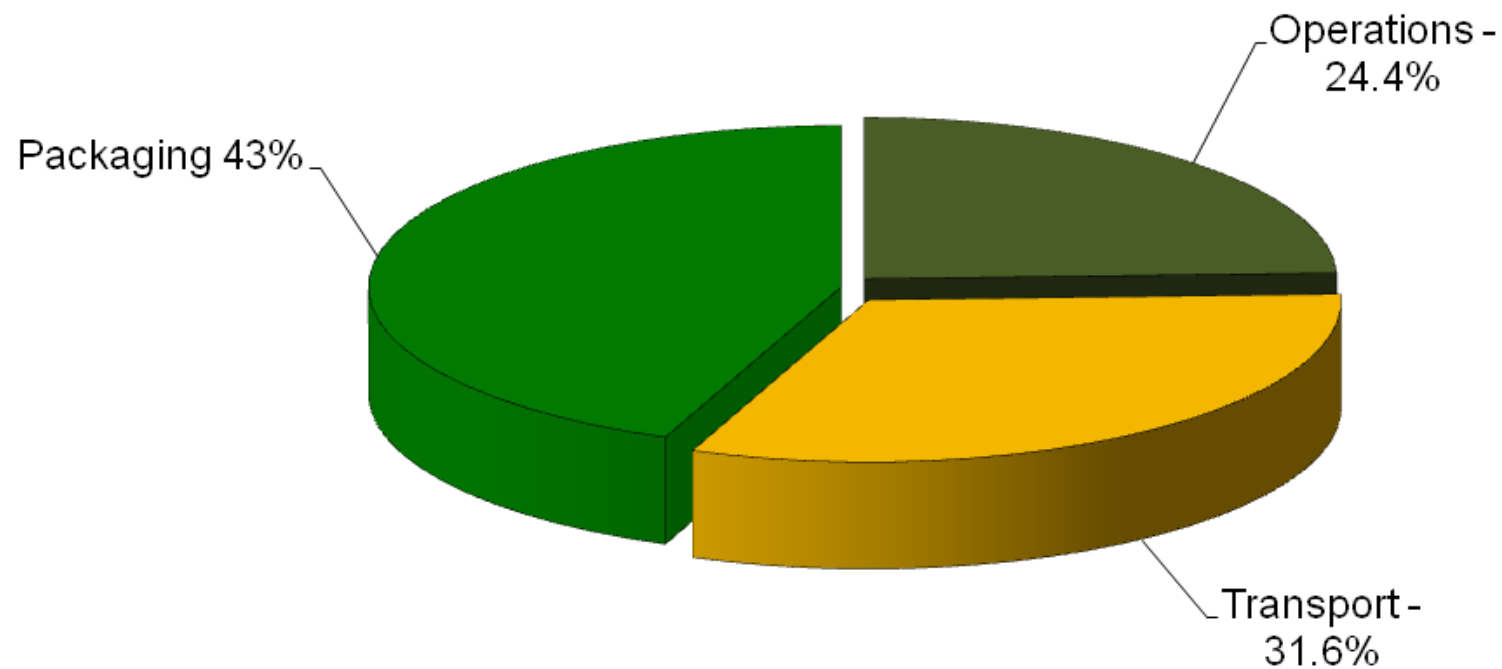
Arla's UK environmental targets

- Meet Climate Change and key voluntary targets to achieve a 34% reduction in CO2 emissions by 2020
 - Renewable energy : 30% by 2020
 - Water: 20% reduction by 2015
 - Waste: Zero to landfill by 2012
- Meet Courtauld 2 and Dairy Road Map targets



What makes up our carbon emissions?

CO2 contribution by business area - 2011



Operations 2005 - 2011

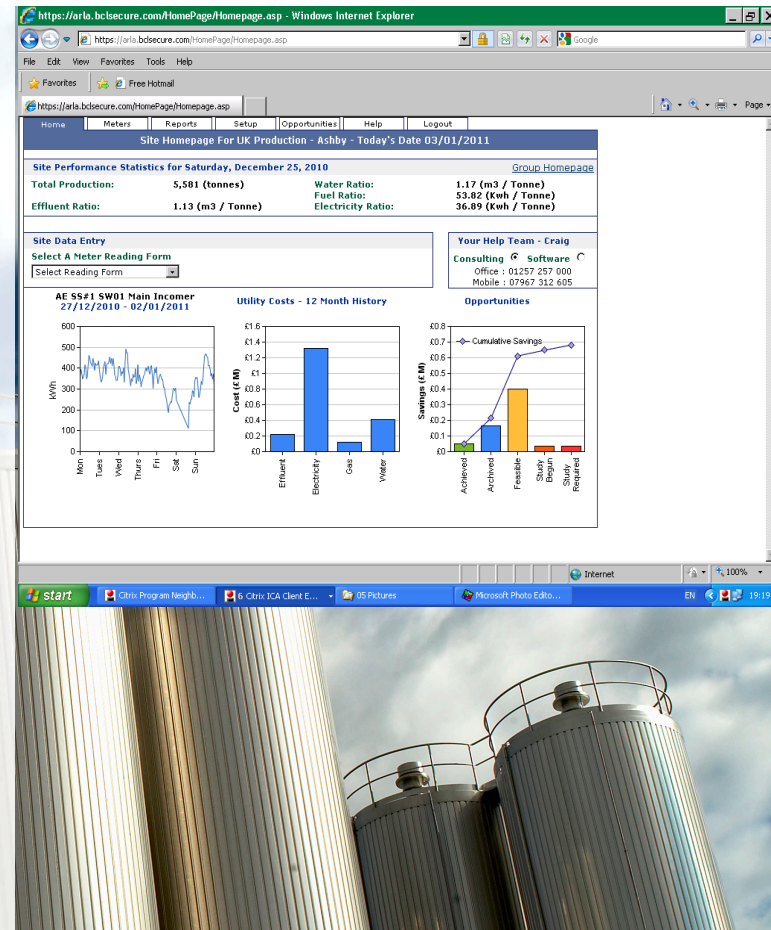
A reduction of CO2 by 18% has been achieved through:

An ongoing programme of business rationalisation to more modern and efficient sites

Focus on energy efficiency through use of Carbon Desktop

Investment in energy efficiency

LEAN programmes



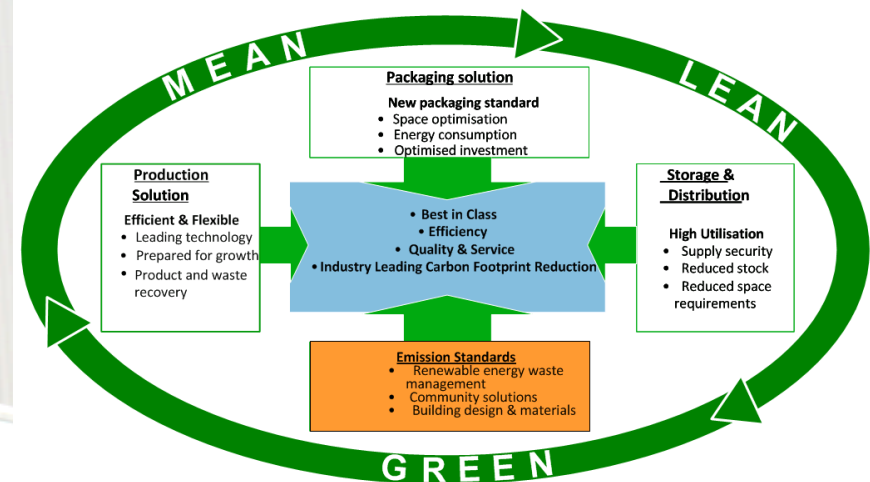
Aylesbury Dairy

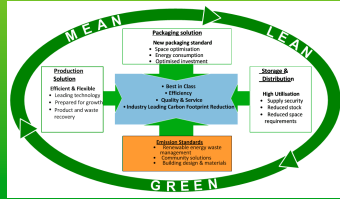
Aylesbury dairy will be zero carbon

MEAN, LEAN, GREEN concept through design, planning & development

Cutting edge technologies, use of renewables and holistic design

Existing sites to use knowledge for and from the Aylesbury project





GREEN

- **GREEN** - technologies generating green solutions
 - Possible active solar (PV)
 - Possible wind (through direct agreements with farmers)
 - Use of biogas for CHP turbines (from own AD)
 - Assessment of further biogas sourcing options off site, either regionally and/or with our farmers



Thank you for your time

